



# **Berryessa Union School District**

## **Measure L Bond Construction Program**

Board of Trustees' Update

November 17, 2015

# Introduction

The following presentation is intended to provide the Board of Trustees with an update on the progress of Measure L Construction Bond Projects. These are projects that are currently active throughout the District.

# **Agenda:**

**Construction Projects for 2016**

**Construction Project Update for 2015**

**Design and Construction Projects for  
2016/2017**

# Construction Projects for 2016

1. **Central Kitchen**
2. F.I.S./School Modernization
  - Noble ES
  - Northwood ES
  - Sierramont MS
  - Summerdale ES
  - Vinci Park ES (Resolving Scope Issues and Schedule Adjustment)
3. Energy Conservation Project - Solar
4. Phase II LAN Upgrade Cable Removal and Replacement
5. Phase I LAN Upgrade Update



# CENTRAL KITCHEN

CHILD NUTRITIONAL SERVICES  
BERRYESSA UNION SCHOOL DISTRICT



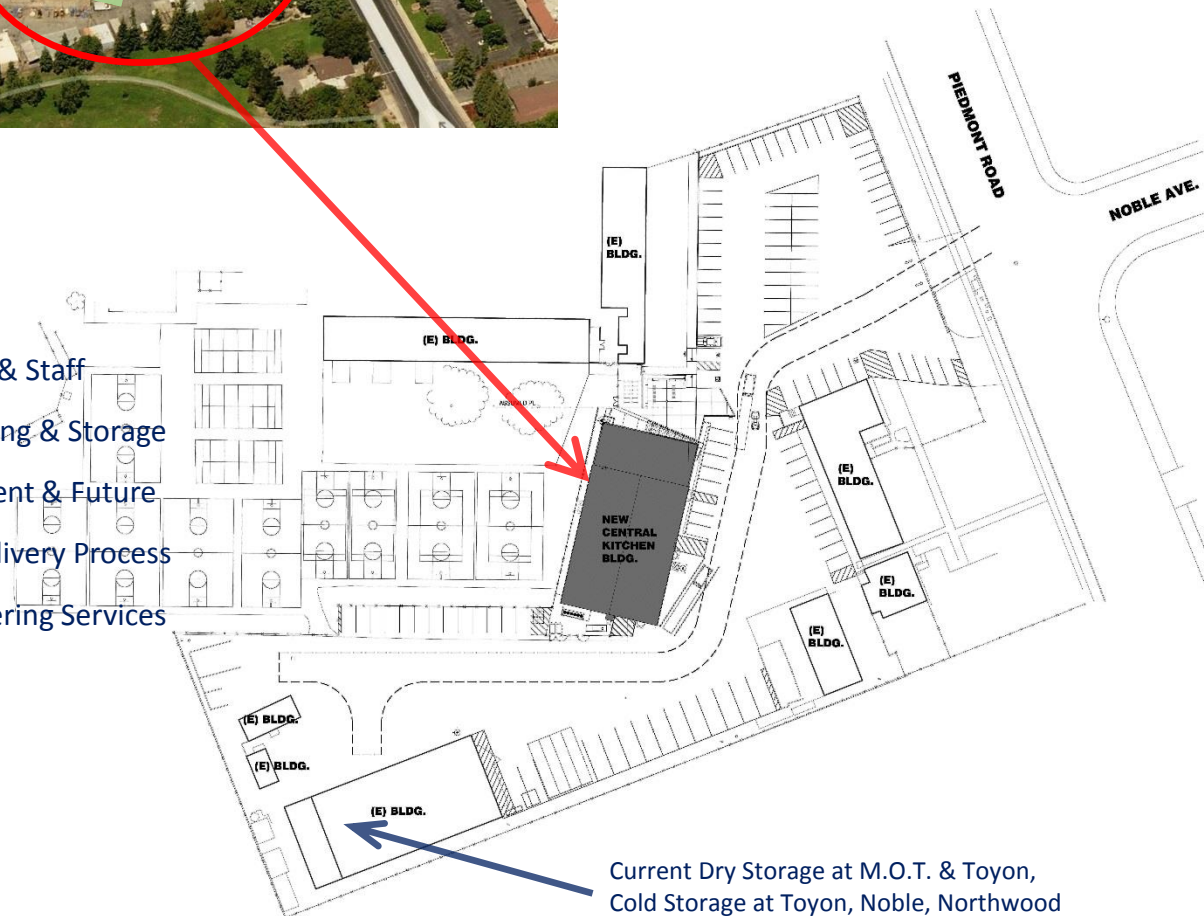
IBI GROUP Architecture Planning

11/17/2015



•Priorities:

- Increase Menu Offerings
- Centralize Administration & Staff
- Consolidate Food Processing & Storage
- Update Equipment – Current & Future
- Efficient Receiving and Delivery Process
- Increase Vending and Catering Services
- Part of M.O.T. Complex

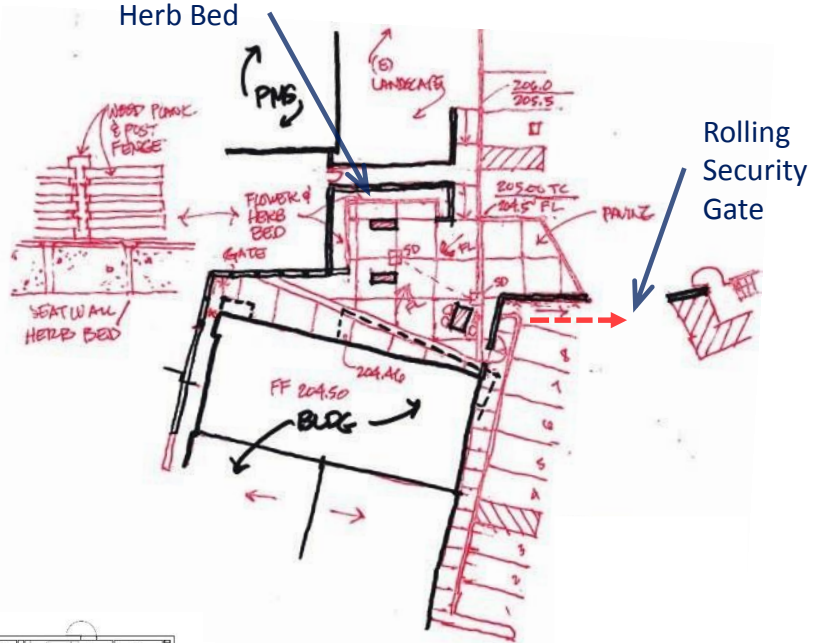


VISION

Current Dry Storage at M.O.T. & Toyon,  
Cold Storage at Toyon, Noble, Northwood

Design Derived From:

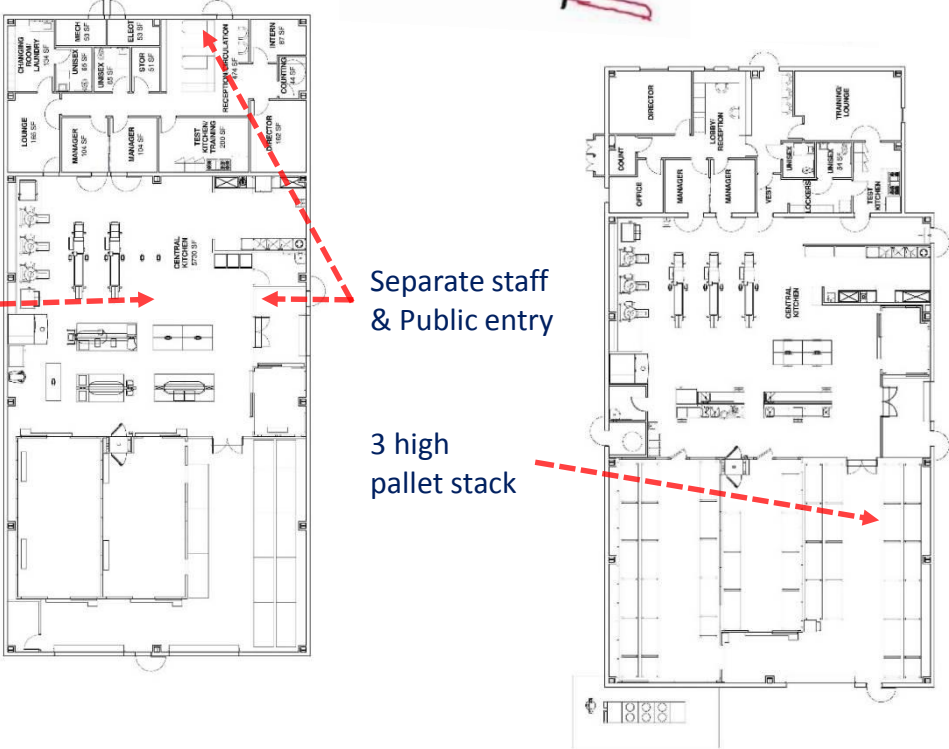
- Population being served; present and future
- Visited local central kitchen facilities; pros and cons
- Food Production & Staff Work Activities
- Food Receiving and Distribution Process
- Secondary Impacts on MOT facilities & site



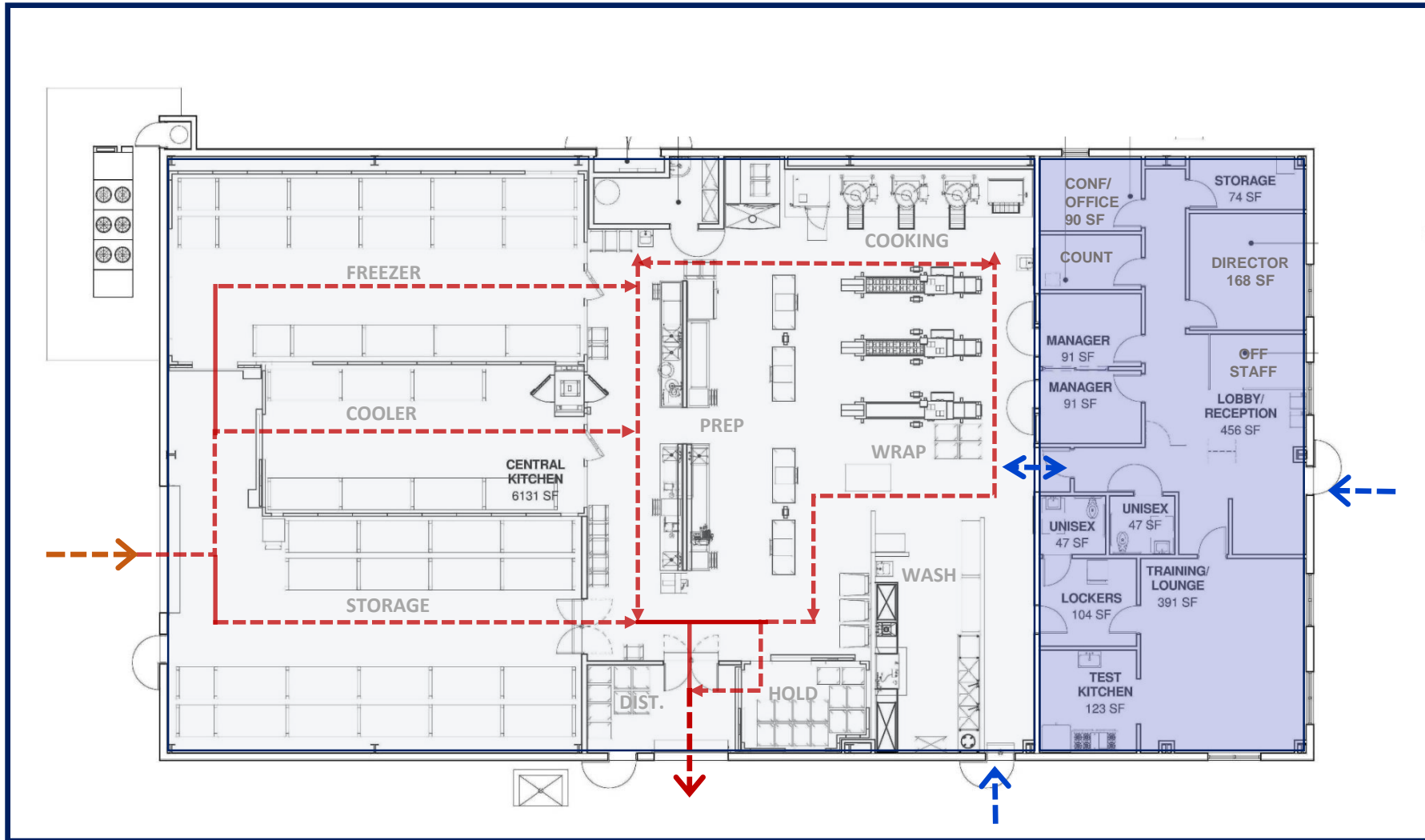
Flow of work should be sequential

Separate staff & Public entry

3 high pallet stack



CONCEPTS



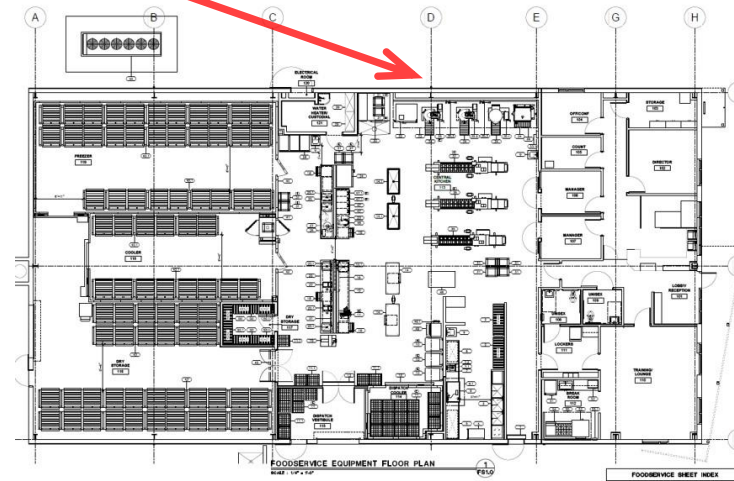
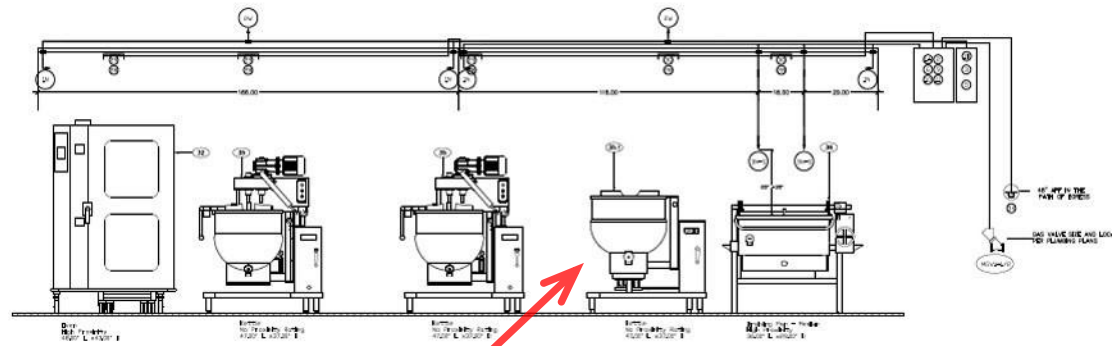
Receiving/Storage

Kitchen/Distribution

Admin./Public

# FOOD PROCESSING

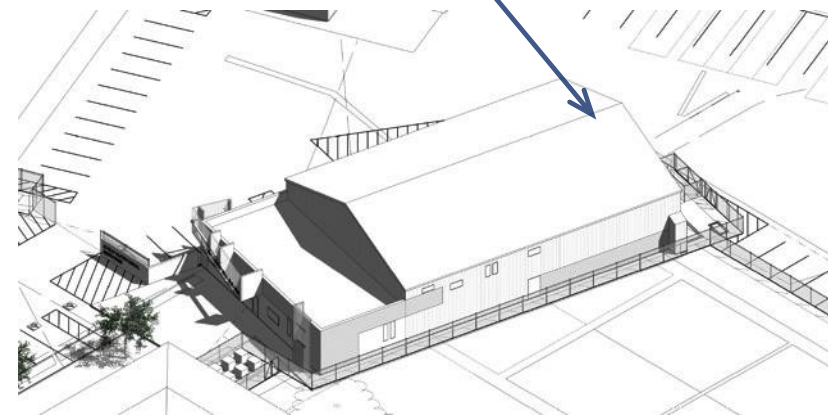
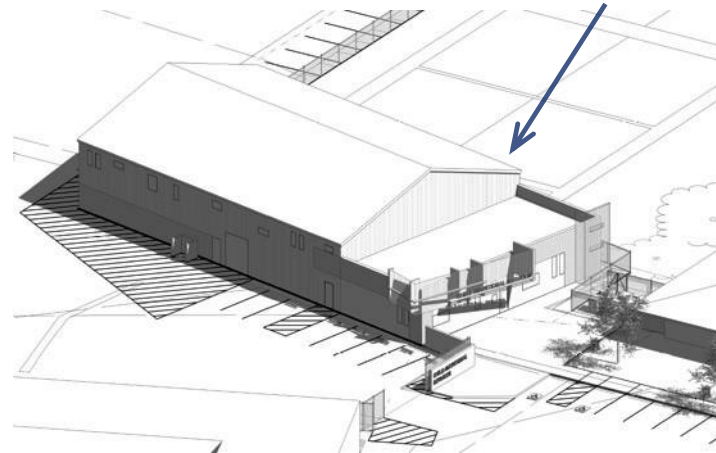




# FOOD SERVICE EQUIPMENT



HEIGHT / VOLUME / MATERIALS / ORIENTATION



MASSING STUDIES



M.O.T. & C.N.S. JOINT ACCESS VIA  
SECURITY GATES INTO M.O.T. YARD

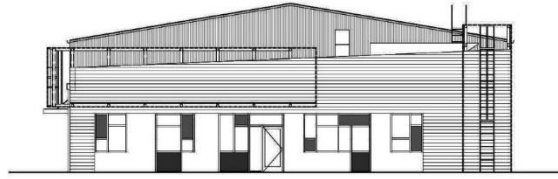
NORTH LIGHT

OPEN TOWARDS PARKING

FRONT WAITING COURT

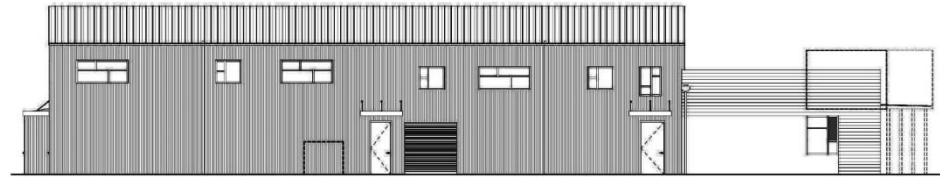
VISIBLE SIGNAGE

## PUBLIC ENTRY



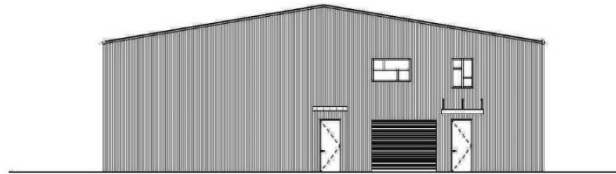
FACES PIEDMONT M.S.

1 NORTH ELEVATION



FACES M.O.T. BUILDING

2 EAST ELEVATION



FACES M.O.T. RELOCATED  
BUS PARKING

3 SOUTH ELEVATION



FACES BASKETBALL COURTS

10'-0" HIGH FENCE

4 WEST ELEVATION

## RELATION TO SURROUNDING AREA



SEPARATE KITCHEN STAFF ENTRY

GATE TO FRONT WAITING COURT

DAYLIGHT INTO KITCHEN & STORAGE

LIMITED VEHICLE PARKING

LARGE DELIVERY TRUCK UNLOADING

SEPARATION FROM PIEDMONT M.S.

DISTRICT TRUCK LOADING

## KITCHEN ENTRY / DISTRIBUTION



ROLL UP DOOR FOR BULK DELIVERIES

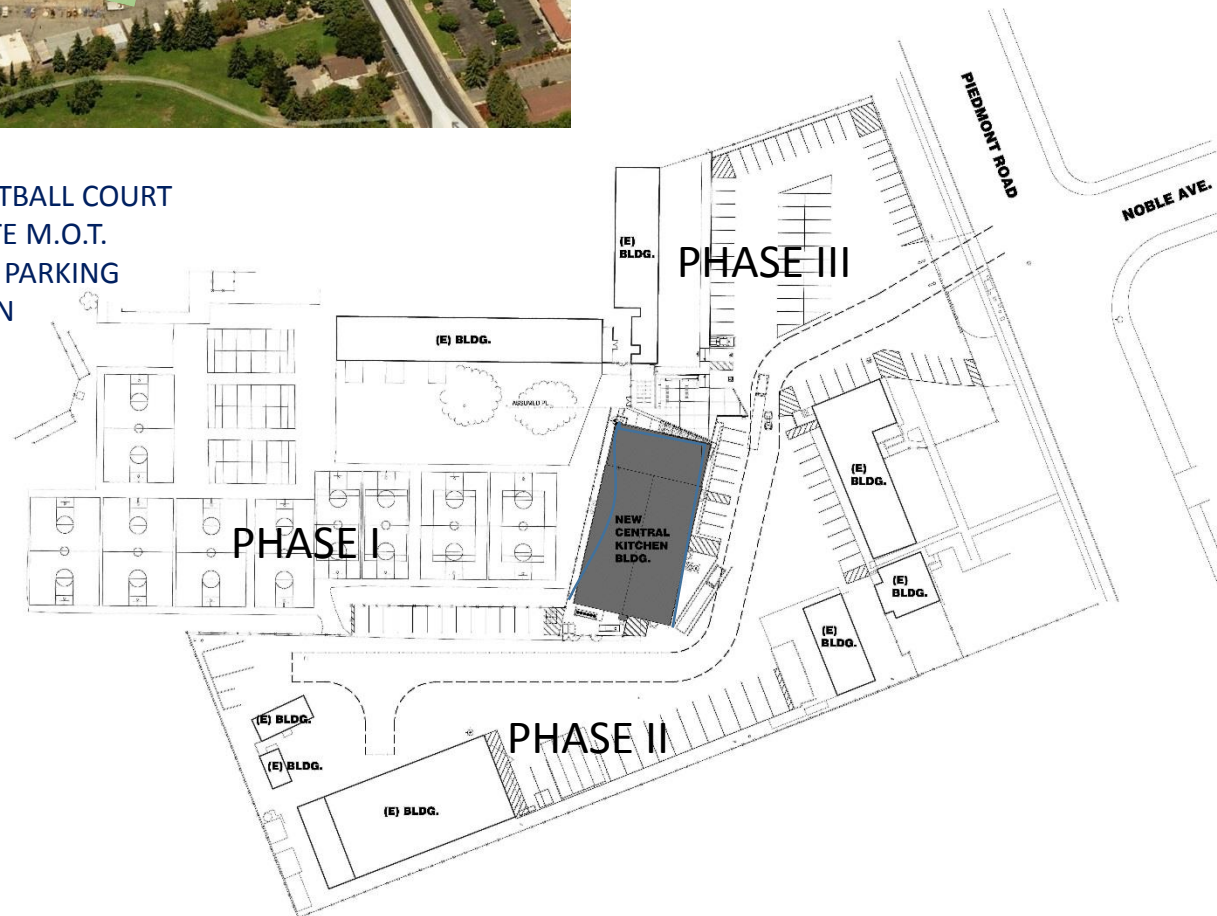
SECURED BUILDING SERVICE AREA

LARGE DELIVERY TRUCK UNLOADING

## RECEIVING & UNLOADING



- Phase I: RELOCATE BASKETBALL COURT
- Phase II: DEMO / RELOCATE M.O.T.  
YARD STORAGE & PARKING
- Phase III: CENTRAL KITCHEN



# PHASING



CENTRAL KITCHEN



# •Providing Healthy Meals



# Construction Projects for 2016

## Central Kitchen

### Bid, Award, Construction, and Closeout

#### Next Steps:

- Complete Drawings for submission to DSA 11/2015
- DSA Review (This will be for review only.)/Finalize Bidding Strategy 11/2015
- Bidding/Award 1/2016 – 3/2016
- Contractor Mobilization 4/2016
- Begin Construction 4/2016
- Construction Complete 10/2016
- Training and Turning over of Facility to District 10/2016
- Testing and Adjusting
- Closeout
- Open and Functioning

# Construction Projects for 2016

1. Central Kitchen
2. **F.I.S./School Modernization**
  - **Noble ES**
  - **Northwood ES**
  - Sierramont MS
  - Summerdale ES
  - Vinci Park ES (Resolving Scope Issues and Schedule Adjustment)
3. Energy Conservation Project - Solar
4. Phase II LAN Upgrade Cable Removal and Replacement
5. Phase I LAN Upgrade Update

# Construction Projects for 2016

## 21<sup>st</sup> Century Learning Environments

### Flexible Instructional **S**pace

- Flexible
- Timeless
- Creative
- Enterprising

### In support of the 4 C's

- **C**reativity
- **C**ritical Thinking
- **C**ollaboration
- **C**ommunication



**BERRYESSA UNION SCHOOL DISTRICT  
NOBLE AND NORTHWOOD ELEMENTARY SCHOOLS**  
FLEXIBLE INSTRUCTION SPACE  
AND RELATED CAMPUS MODERNIZATIONS

**DOUGHERTY + DOUGHERTY**



DOUGHERTY + DOUGHERTY ARCHITECTS  
11.17.15

Berryessa Union School District  
Modernization

# INTRODUCTION

## TEAM MEMBERS

### ARCHITECTURE

#### DOUGHERTY + DOUGHERTY ARCHITECTS LLP

- + Gray B. Dougherty, AIA, LEED AP
- + Steve Parker, LEED AP
- + Brandon Featherstone
- + Zoe Liang

### COST ESTIMATING

#### RGM AND ASSOCIATES

- + Ralph Caputo, CEO & PRESIDENT
- + Jalil Bazyar, P.E.



# INTRODUCTION

## PROJECT SCOPE



# INTRODUCTION

## PROJECT PROCESS TO DATE

- + MEETING WITH THE DISTRICT
- + SITE ASSESSMENTS
- + COLLABORATION WITH STAKEHOLDERS
- + COORDINATION WITH CONSULTANTS
- + REFINING THE BUDGET WITH RGM





# GENERAL MODERNIZATION SCOPE

## NOBLE & NORTHWOOD

- + DRINKING FOUNTAINS / ACCESSIBLE UPGRADES
- + WINDOW REPLACEMENT
- + PAVING REPAIR
- + EXTERIOR PAINTING
- + FLOOR FINISHES UPGRADES
- + M.P STAGE & CURTAIN UPGRADES
- + SPECIAL PROJECTS



# SITE INTERVENTIONS

GOALS | NOBLE



EXISTING QUAD

## GOALS FOR THE QUAD

- ENHANCE SECURITY BY INCREASING LIGHTING
- UTILIZE THE CENTRAL NODE BY IMPROVING SHADING, SEATING AND CONNECTION

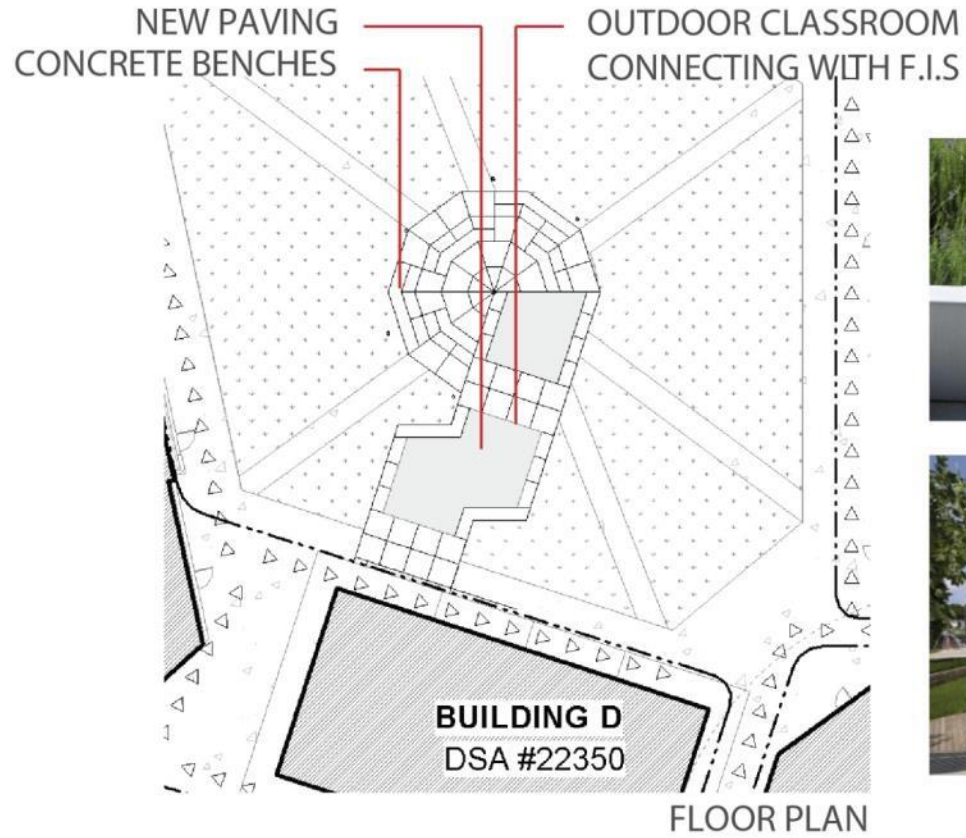
## SOLUTION

**CREATE SHADED  
EXTERIOR LEARNING SPACE  
AS AN EXTENSION OF F.I.S**



# SITE INTERVENTIONS

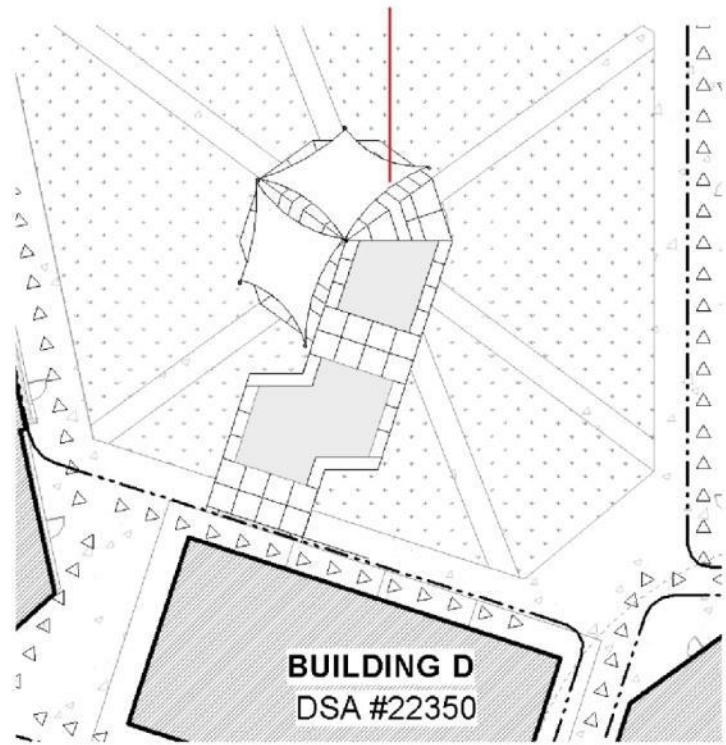
EXTERIOR CLASSROOM | NOBLE



# SITE INTERVENTIONS

EXTERIOR CLASSROOM | NOBLE

SHADING DEVICE WITH MOUNTED LED LIGHTS

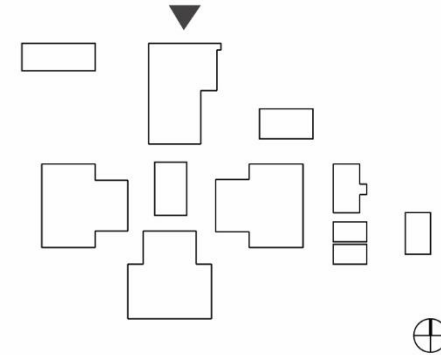


ROOF PLAN



# SITE INTERVENTIONS

GOALS | NORTHWOOD



## GOALS FOR THE ENTRANCE

**BUILD SCHOOL IDENTITY & HIDE MECHANICAL EQUIPMENT  
BY CREATE AN ENTRANCE TRELLIS WITH RAIN CANOPY**

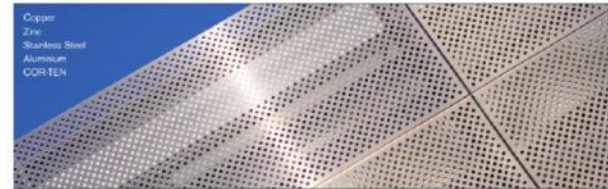


DOUGHERTY + DOUGHERTY ARCHITECTS  
11.17.15

Berryessa Union School District  
Modernization

# SITE INTERVENTIONS

## ENTRANCE TRELIS | NORTHWOOD



# FLEXIBLE INSTRUCTION SPACE

## GOALS

Through the design of the new space, we hope to ...

- › inspire imagination in students
- › promote integrated learning and creativity
- › increase student collaboration and communication
- › boost hands-on interaction







# FLEXIBLE INSTRUCTION SPACE

## STRATEGIES

### -THE SPACE

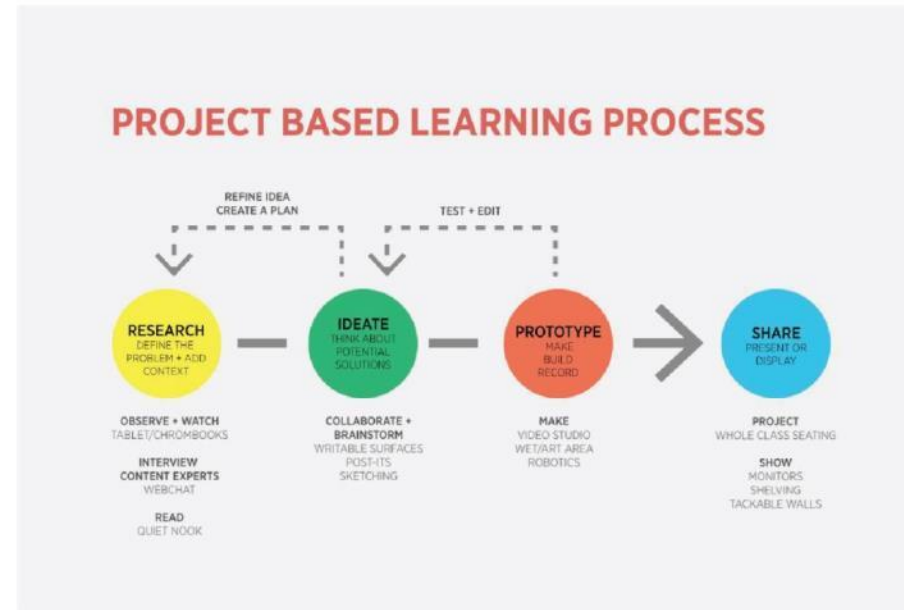
FLEXIBLE INSTRUCTIONAL SPACE  
MULTIPLE CLASSES AT A TIME  
COLORFUL AND ENERGETIC

### -THE TOOLS

VIRTUAL EXPERIENCES / ONLINE LEARNING  
TECHNOLOGY INTEGRATION  
INTERACTIVE SURFACES  
HANDS-ON TOOLS + MATERIALS

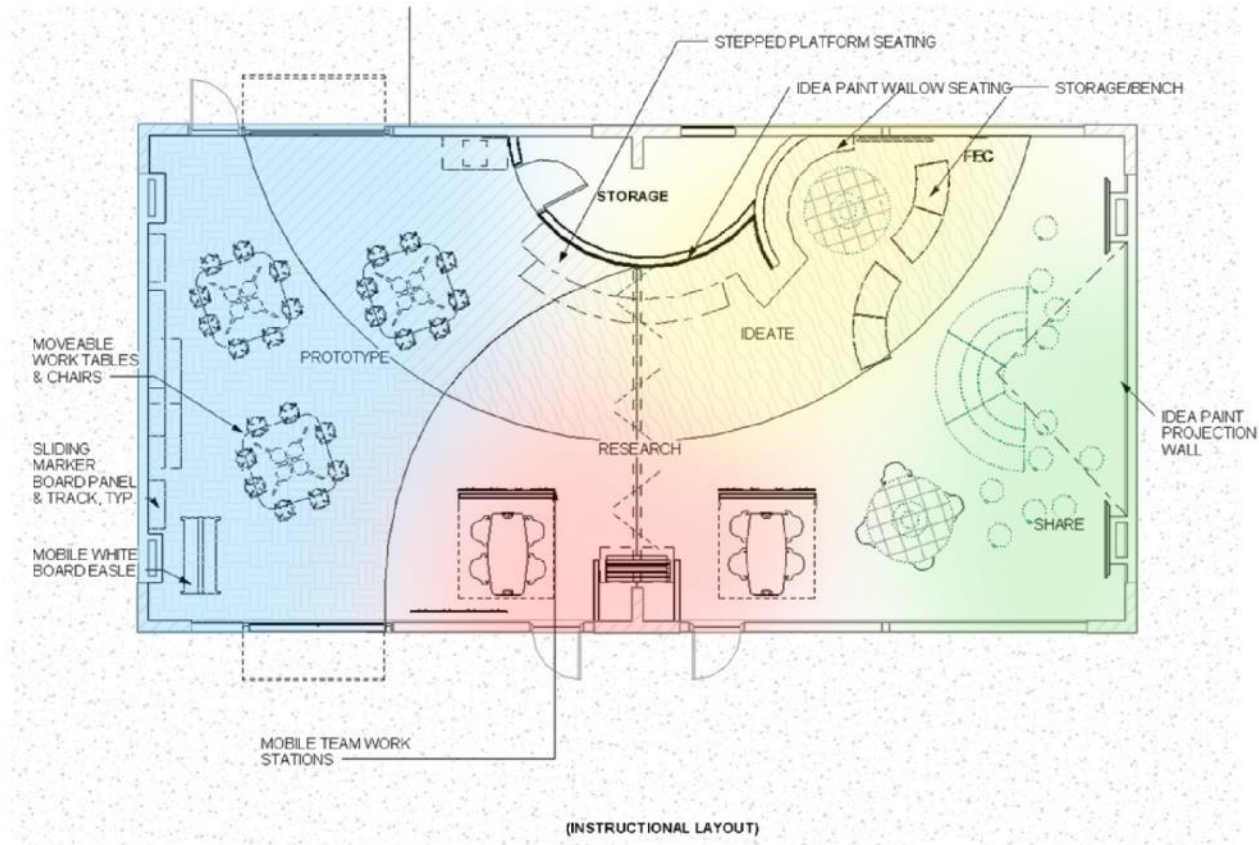
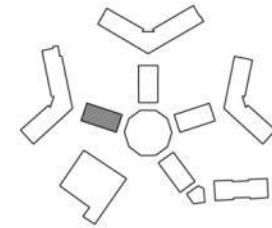
### -THE CURRICULUM

PROJECT BASED LEARNING  
DEVELOP THE 4 C'S:  
CRITICAL THINKING, COLLABORATION,  
COMMUNICATION, AND CREATIVITY



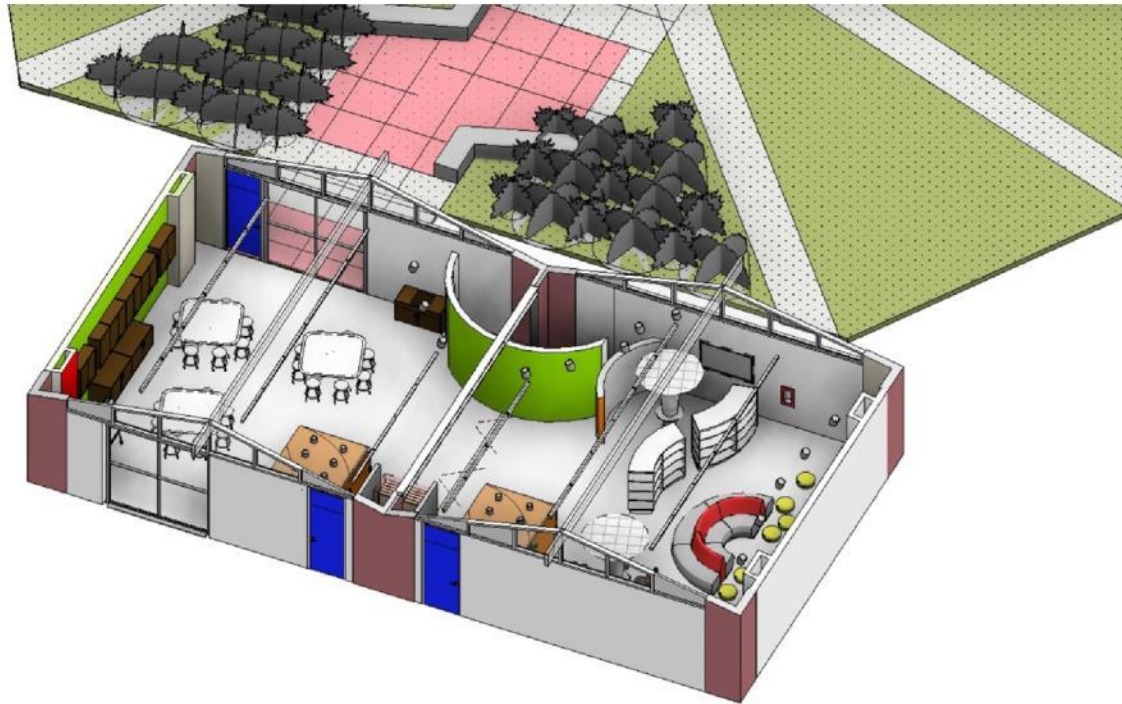
# FLEXIBLE INSTRUCTION SPACE

NOBLE



# FLEXIBLE INSTRUCTION SPACE

NOBLE



DOUGHERTY + DOUGHERTY ARCHITECTS  
11.17.15

Berryessa Union School District  
Modernization

# FLEXIBLE INSTRUCTION SPACE

NOBLE

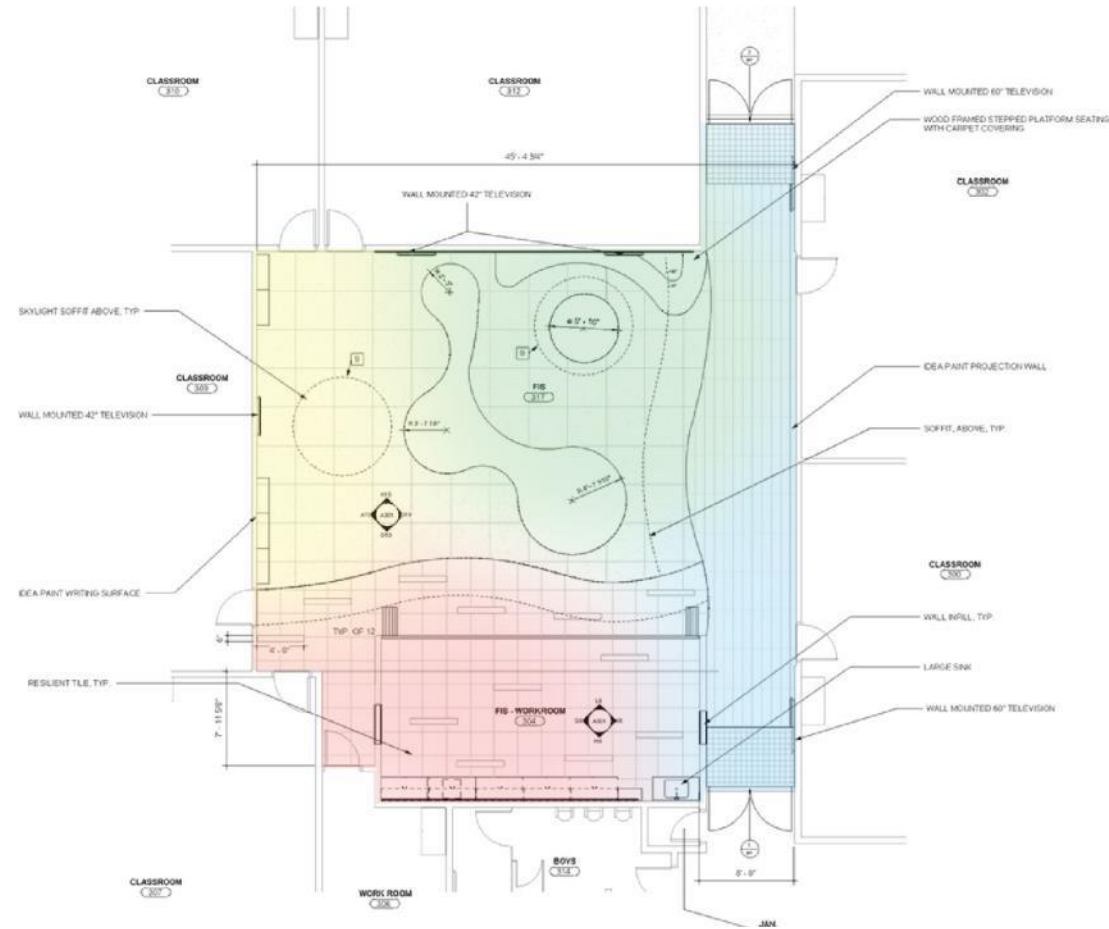
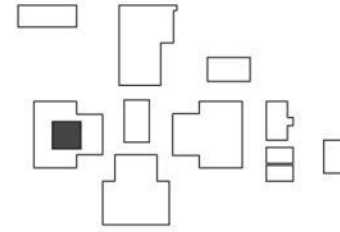


DOUGHERTY + DOUGHERTY ARCHITECTS  
11.17.15

Berryessa Union School District  
Modernization

# FLEXIBLE INSTRUCTION SPACE

## NORTHWOOD



# FLEXIBLE INSTRUCTION SPACE

## NORTHWOOD



# FLEXIBLE INSTRUCTION SPACE

## NORTHWOOD



# FLEXIBLE INSTRUCTION SPACE

NORTHWOOD



DOUGHERTY + DOUGHERTY ARCHITECTS  
11.17.15

Berryessa Union School District  
Modernization



# **Construction Projects for 2016 Noble/Northwood F.I.S./School Campus Modernization Bid, Award, Construction, and Closeout**

## Next Steps:

- Complete Drawings for submission to DSA 11/2015
- DSA Review 11/2015 – 4/2016
- Bidding 4/2016
- Award 6/2016
- Site Packing and Moving 6/2016
- Contractor Mobilization 6/2016
- Begin Construction 6/2016
- Construction Complete 8/2016
- Project Closeout 8/2016

# Construction Projects for 2016

1. Central Kitchen
2. F.I.S./School Modernization
  - Noble ES
  - Northwood ES
  - Sierramont MS
  - Summerdale ES
  - Vinci Park ES (Resolving Scope Issues and Schedule Adjustment)
3. **Energy Conservation Project - Solar**
4. Phase II LAN Upgrade Cable Removal and replacement
5. Phase I LAN Upgrade Update

# Construction Projects for 2016

## Energy Conservation Project - Solar

### Design and Negotiations

- Contract Negotiations – In progress
- Cost Proposal/Performance Guarantee – In progress
- Board Approval – TBD

### Post Board Approval of Contract

- DSA Submittal, Review and Approval - TBD
- Construction – TBD
- Turnover – TBD
- Electricity Production – TBD

# Construction Projects for 2016

1. Central Kitchen
2. F.I.S./School Modernization
  - Noble ES
  - Northwood ES
  - Sierramont MS
  - Summerdale ES
  - Vinci Park ES (Resolving Scope Issues and Schedule Adjustment)
3. Energy Conservation Project - Solar
4. **Phase II LAN Upgrade Cable Removal and Replacement**
5. Phase I LAN Upgrade Update

# Construction Projects for 2015

## Phase II LAN Upgrade Cable Removal and Replacement

Remaining 10 School Sites

- Prepare Bid Package 1/2015
- Bidding 2/2016
- Award 4/2016
- Contractor Mobilization 6/2016
- Construction 6/2016 – 7/2016
- Project Closeout 8/2016

# Construction Projects for 2016

1. Central Kitchen
2. F.I.S./School Modernization
  - Noble ES
  - Northwood ES
  - Sierramont MS
  - Summerdale ES
  - Vinci Park ES (Resolving Scope Issues and Schedule Adjustment)
3. Energy Conservation Project - Solar
4. Phase II LAN Upgrade Cable Removal and Replacement
5. **Phase I LAN Upgrade Update**

# Construction Projects for 2016

## Phase I LAN Upgrade Cable Removal and Replacement

- Staff is currently assessing the completed work to determine what is needed to complete the project
- The missing items will be assigned to a new contractor so that the work can be completed
- A schedule to get the work completed will be developed once the scope is defined
- The cost will be back-charged to the original Phase I contractor
- Current condition of network; minor issues throughout the district. The District will contract staff augmentation to assist with work load as needed.

# **Design and Construction Projects for 2016/2017**

November 17, 2015



# Design Projects for 2016 Construction 2017

## F.I.S./School Campus Modernization

- Laneview ES
- Ruskin ES
- Piedmont MS
- Toyon ES



**Berryessa Union School District**  
**Measure L Bond Construction Program**

**Thank You**

November 17, 2015